

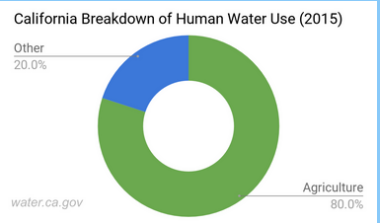


Agricultural Data Comparison and Visualization

Anna Ivannikova · Bryan Wu · Daniel Shu · Meredith Xu · Richard Rodriguez

Motivation

- Reduce water use on large scale
- Combat climate change
- 80% of human water use in California is dedicated to agriculture



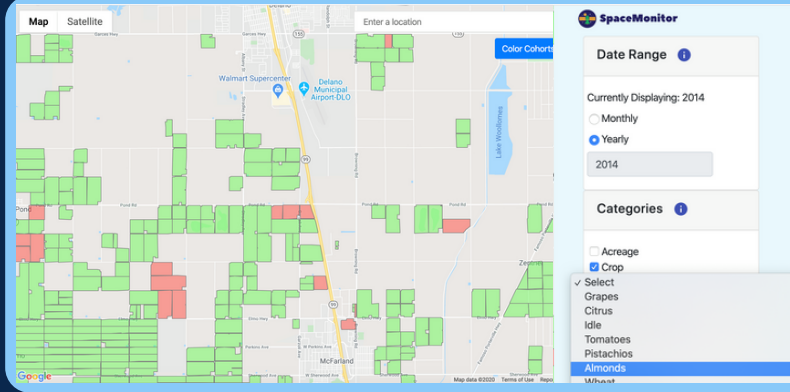
Solution

- Track usage in agricultural sector
- Visualize water usage throughout a time period
- Compare water usage between similar fields
- Can be extended to track water use in other sectors

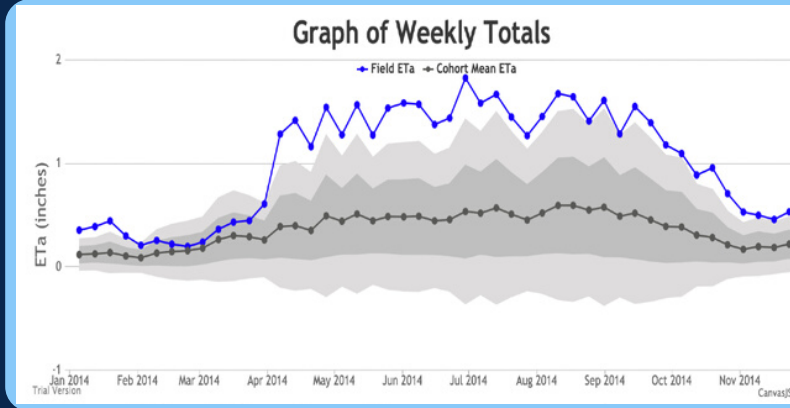
Innovation

- One of first applications built using this satellite dataset
- Resource conservation districts can be more proactive vs reactive

User Interface



- Green/Red coloring based on water anomaly detection algorithm
- Search a farm by location and apply filter options



- View water usage for any farm over a period of time
- Compare against the average water usage of similar farms

Technologies

